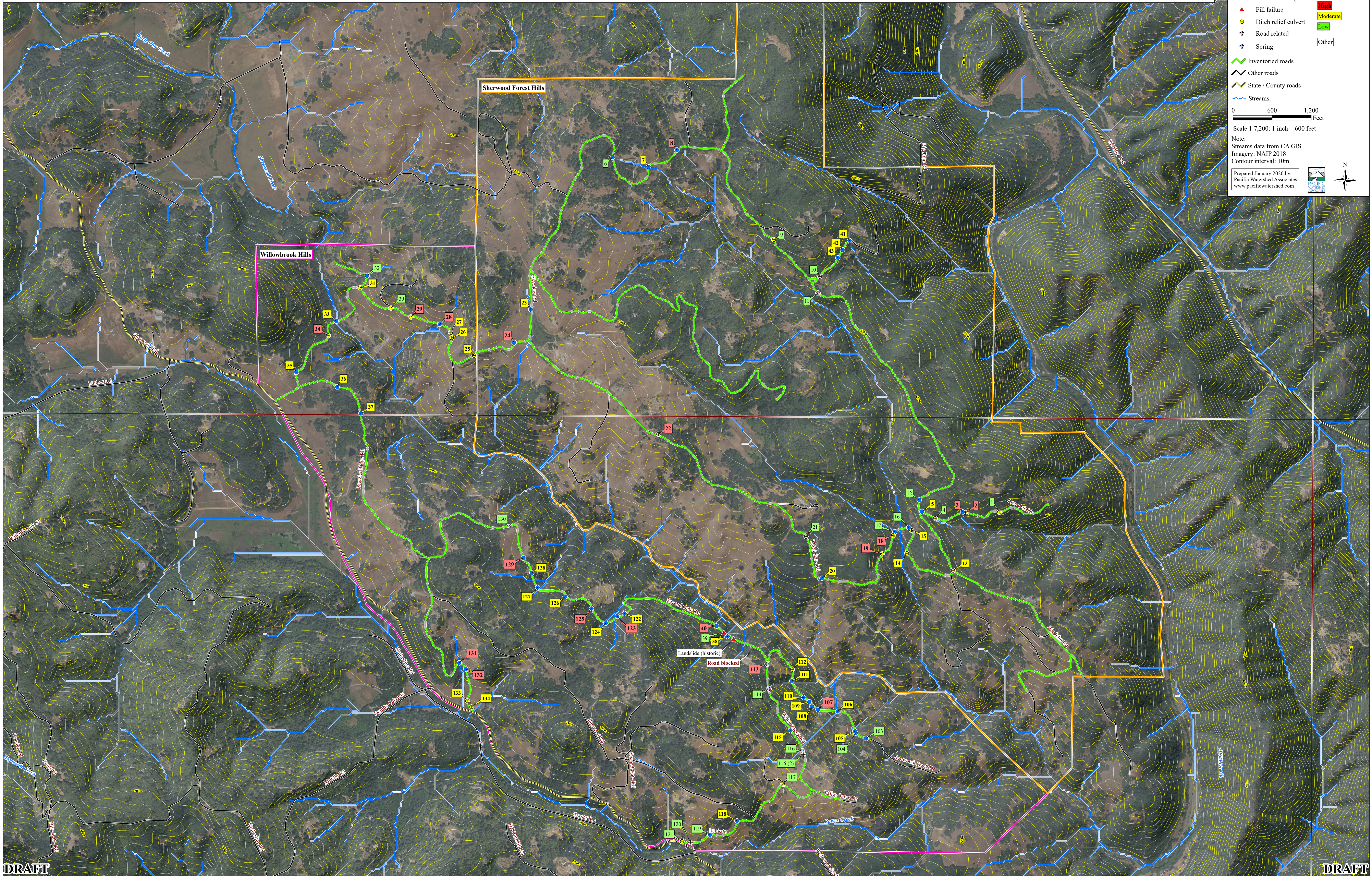


**Map 2. DRAFT Future Erosion and Sediment Delivery Sites and Treatment Immediacy, SWARM Road Network, Eel River Road Sediment Treatment and Inventory Project D1713102, Mendocino County, California.**



**Future sediment delivery sites**

- Stream crossing
- ▲ Fill failure
- ⊕ Ditch relief culvert
- ⊕ Road related
- ⊕ Spring

**Treatment priorities**

- High
- Moderate
- Low
- Other

**Other symbols:**

- Inventoried roads
- Other roads
- State / County roads
- Streams

0 600 1,200 Feet  
Scale 1:7,200; 1 inch = 600 feet

Note:  
Streams data from CA GIS  
Imagery: NAIP 2018  
Contour interval: 10m

Prepared January 2020 by:  
Pacific Watershed Associates  
www.pacificwatershed.com